

Effective tool to optimize performance and workforce utilization



VantageRPM is a best-in-class labor management system and is designed for ease of implementation and use and provides optimal flexibility in tracking individual and organizational performance metrics specific to each operation.

The system is designed for easy implementation and use and provides optimal flexibility in tracking workforce performance metrics specific to each operation.

- Configured to meet the specific requirements of each operation
- Enables comprehensive data capture – Tethered and untethered functions
- Is system agnostic – Interfaces with any WMS, HR, Payroll/Timeclock System
- Customer-defined activities and terminology

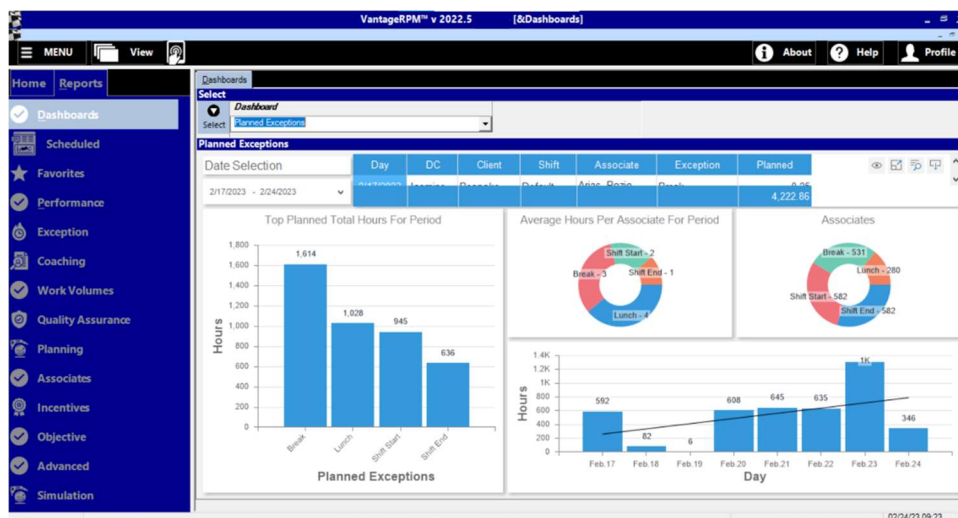


VantageRPM is a powerful, dynamic solution that will meet all of your workforce management needs. Key Operations of VantageRPM include:

- Performance Reporting
- Utilization Reporting
- Discipline and Progression Schedules
- Coaching and Observation Tracking
- Labor Planning and Forecasting
- Team and Project Tracking
- Quality and Safety Metrics
- Time and Attendance Monitoring
- Performance Incentives
- Travel Calculations

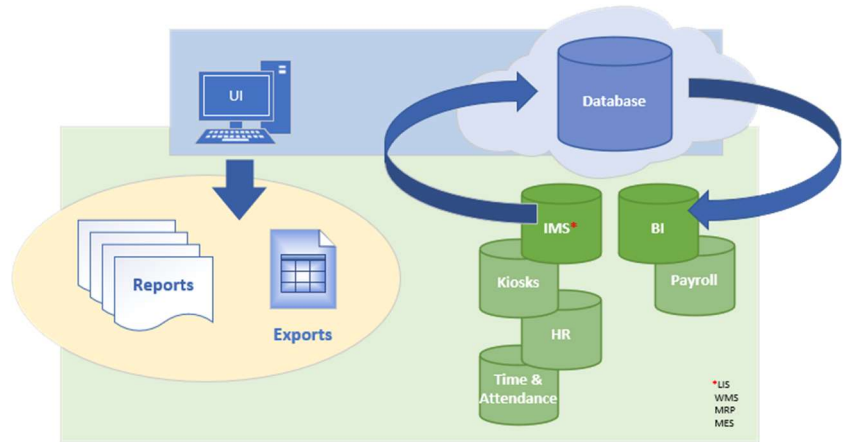
VantageRPM was created by Argent Global Services. They are labor management experts who utilized extensive engineering and operational experience as well as input from client partners when developing VantageRPM labor management system. Examples of Features and Functions:

- Dashboards and monitors
- Dynamic, user-controlled reports.
- Customizable organizational hierarchy and reporting structure
- Enterprise-level reporting
- Scheduled email distribution of reports
- Exports for data analysis
- Unlimited number of functions, units of measure, and metrics
- User ability to add, change or delete functions and metrics
- Interface with any WMS, HR, Payroll or Timeclock System
- Kiosk data entry and viewing
- Dynamic, user-defined, individual associate-based discipline and progression schedules
- Any Labor Standard metrics - Individual, team, direct, indirect and/or combined standards
- Date activation/de-activation/tracking of seasonal standard factors
- Performance Coaching – reporting, tracking, scheduling, planning
- Forecasting & Labor Planning - based on historical or expected volumes and performance
- Travel Tracking – Accurate, realistic travel time allocation utilizing XYZ, equipment types and speeds, directional travel, forced patterns and blocks



VantageRPM can interface with any system and has an easy-to-use and versatile user interface that provides powerful reports or data exports.

VantageRPM is a cloud-based solution powered by the Windows Azure: Microsoft cloud environment, which provides enterprise level performance, security and reliability. The LMS utilizes a service-oriented architecture (SOA) with web services and configurable workflows based upon Microsoft.NET 2.0 architecture.



Contact Argent Global Services for a Demo
405-848-1682
info@argentglobalservices.com